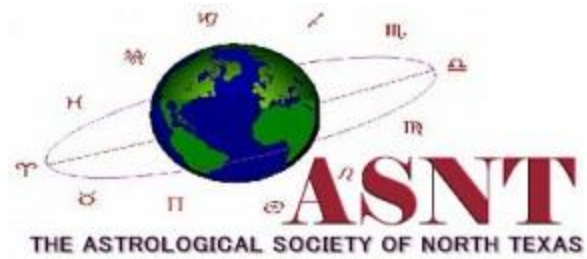


# Newsletter



May 2015

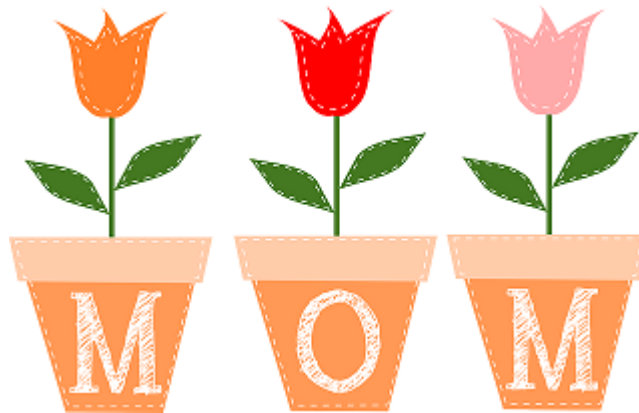
Welcome to the Astrological Society of North Texas!

*Table of Contents:*

*Meetings\_\_\_\_\_1*  
*President's Message\_3*  
*State of the Planets\_4*  
*May Moon\_\_\_\_\_4*  
*May Birthdays\_\_\_\_5*  
*Classes/offerings\_\_\_6*

*Meetings -*

**No Meeting this month.** Everyone have a wonderful Mother's Day, which is the 2nd Sunday of the Month in May, and so we will not be meeting.



In April we were able to enjoy a wonderful presentation by renowned astrologer Diane Eichenbaum and her two daughters. She was able to share with us some information that she feels is most important when helping clients with their charts, and we were able to wish her a fond farewell and Bon Voyage, as she is moving to Mexico this month.

## ASNT Membership Meeting Minutes

April 12, 2015

2 visitors (Diane's daughters)

Marie opened the meeting at 1:46 p.m. and asked Diane Eichenbaum's daughters to introduce themselves. The discussion then turned to plans for the November workshop. Being considered is the mailing of postcards to announce the workshop. The program is still being reviewed and details will be available soon.

Christy asked everyone to mark their calendars for Nov 6th thru the 8th. She advised that the Board has approved the content for Friday and Saturday evening talks. Early registration will be available online and by phone as early as June and running through August with Early Bird discounts.

Christy discussed the upcoming meeting schedule. She reminded all attendees there will be no meeting in May due to Mother's Day falling on the 2nd Sunday. The speaker for the June meeting will be Russ Ohlhausen from Florida. ASNT member Rhavda Emison will speak to us in July and ASNT member Randy Ruyle is tentatively scheduled to talk to us in August. Topics from all three meetings will relate in some form to our November workshop.

Christy then introduced Diane Eichenbaum. Using several prominent charts, Diane shared techniques she uses when interpreting charts.

The meeting ended at 3:02 p.m.



## President's Message

Will April showers bring May flowers? If it didn't flood them out, it should!

For those of who missed last month's speaker, Diane Eichenbaum was absolutely wonderful! Diane presented Alan Turing's chart, with analysis, along WWII and his solar return, Steve Jobs and other computer notables. If it wasn't for this man, I don't know that we simply wouldn't be as a society where we are now., Whether it be the effects of the invention of the computer, or the fact that he cracked Hitler's code that lead to winning WWII. The symbolism of Apple Computer's logo, bite and all, was a real eye opener.

As we enter Taurus and the second spring sign, we are faced with a feisty Scorpio full moon on the 3rd be prepared for something to come to a head in whatever house yours falls in. A transformation sign in a transformation mode - ouch!

And don't forget the Mercury retrograde from May 18 - June 11th. For myself, being born Marx, I find I go into overload those few weeks. I call it my "Take a Number Mode". Things tend to go better for me communication wise, and my calendar pushes out about 3 weeks; hence the "Now Serving" predicament I get in. Donna Henson says it's because other people tend to see things my way during this transit. I'd like to hear what other MerRx's have to say about this. Not much is written about it. Then comes the big debate - is Mercury really in a detriment mode, or is the fact that Mercury is between the sun and earth, and not on the far side of the sun, further from us, and blocked by the sun, a stronger Mercury? Hmmmm. Sounds like a seminar in the making!

We skip this month's meeting due to Mother's Day, but we will have our regular meeting again next month. See you then, an Happy Mother's Day!

Marie Loeb, ASNT President 2015



# State of the Planets

Making sure a planet is direct and in good aspect for activities represented by their rulership, we find that-

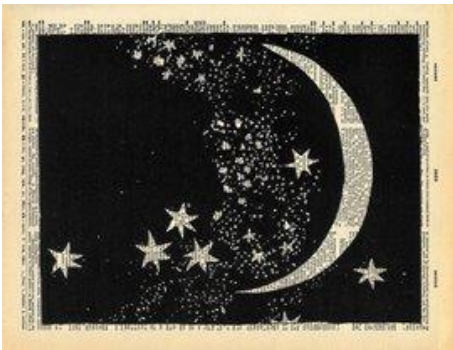
**Sun** – Ingresses to Gemini May 21.

**Mercury** – starts out strong in Gemini, showing off to his rival Jupiter via an opposition to Saturn in the jovial planet's sign, but then stations **retrograde** in the dark of the new moon on May 18th.

**Saturn** – Great success can be had by Jupitarian means now with Saturn in Sagittarius, but over-spending, over-indulgence or irresponsibility can have serious consequences now, so the best course is to look before you leap and think before you speak.

**Venus** – Relationships can be volatile with Venus disposing Mars and moving into emotional Cancer on the 7th, then

**Mars** – goes into Gemini on May 11th giving her some relief.



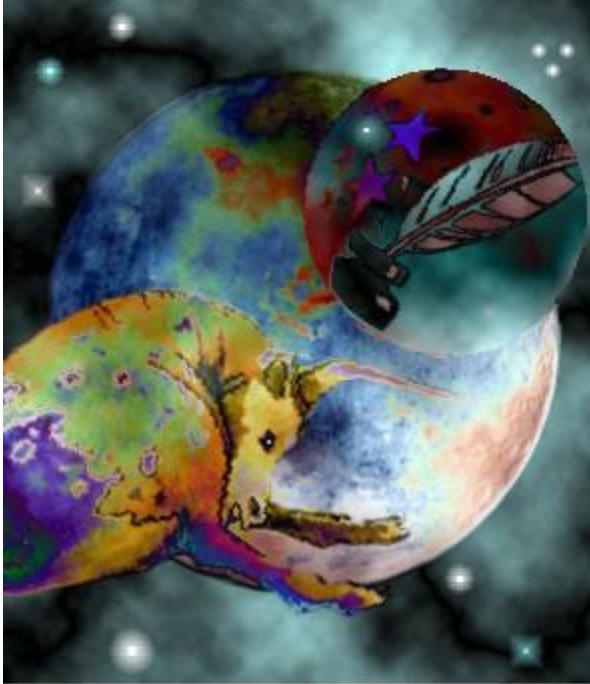
**Local Moon** for MAY~ Full moon Sunday, May 3rd @ 13 $\mu$ 23. New moon on May 17th @ 26 $\gamma$ 56, conjunct Algol. Luckily, the MC in our area is conjunct Spica at the same time.

May 2, 2015	9:03 AM	Moo Trine Ven V/C	May 20, 2015	8:56 AM	Moo enters Cancer
May 2, 2015	8:47 PM	Moo enters Scorpio	May 21, 2015	7:36 PM	Moo Sqr Ura V/C
May 4, 2015	8:49 PM	Moo Oppos Mar V/C	May 22, 2015	4:42 PM	Moo enters Leo
May 5, 2015	6:13 AM	Moo enters Sagittarius	May 24, 2015	5:49 AM	Moo Trine Ura V/C
May 7, 2015	12:51 PM	Moo Oppos Ven V/C	May 25, 2015	3:52 AM	Moo enters Virgo
May 7, 2015	1:16 PM	Moo enters Capricorn	May 26, 2015	9:21 PM	Moo Sxtil Ven V/C
May 9, 2015	3:35 PM	Moo Trine Mar V/C	May 27, 2015	4:42 PM	Moo enters Libra
May 9, 2015	6:22 PM	Moo enters Aquarius	May 29, 2015	3:20 PM	Moo Sqr Ven V/C
May 11, 2015	5:36 AM	Sun Sqr Moo V/C	May 30, 2015	4:34 AM	Moo enters Scorpio
May 11, 2015	9:53 PM	Moo enters Pisces	June 1, 2015	6:01 AM	Moo Trine Ven V/C
May 13, 2015	11:55 AM	Sun Sxtil Moo V/C	June 1, 2015	1:39 PM	Moo enters Sagittarius
May 14, 2015	12:13 AM	Moo enters Aries			
May 15, 2015	7:04 AM	Moo Conj Ura V/C			
May 16, 2015	2:02 AM	Moo enters Taurus			
May 17, 2015	11:13 PM	Sun Conj Moo V/C			
May 18, 2015	4:27 AM	Moo enters Gemini			
May 19, 2015	12:57 PM	Moo Sxtil Ura V/C			

Note: Times are for time zone 6 hours West. DST is observed.



## May Birthday Returns

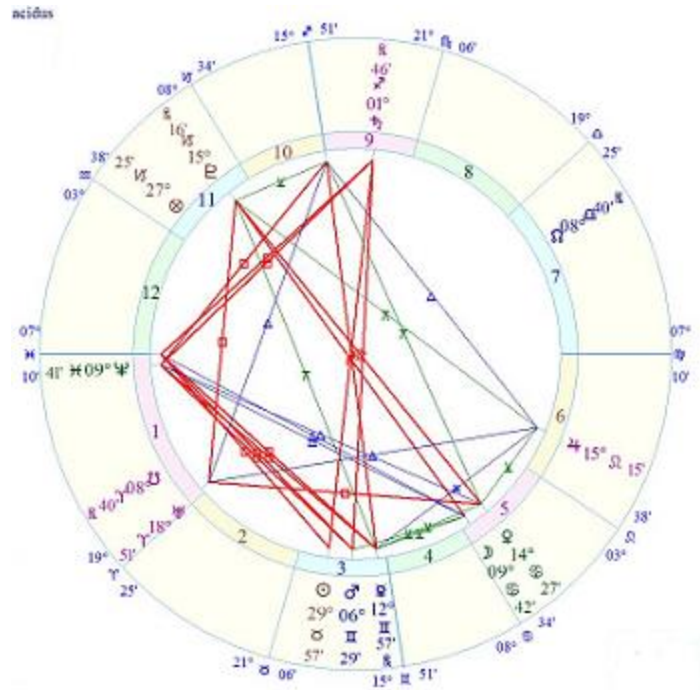


### Happy Birthday to Linda and Ina!

Linda's solar return ascendant lies in her natal 7th house of partners and relationships. This will possibly seem hazy and difficult to deal with since Pisces is on the cusp, but Neptune, the ruler is there to help you deal with relationships in a compassionate and accepting way, dissolving barriers and giving you insights

you might not have had before. You will need to use this to offset the Mars opposition to Saturn which is

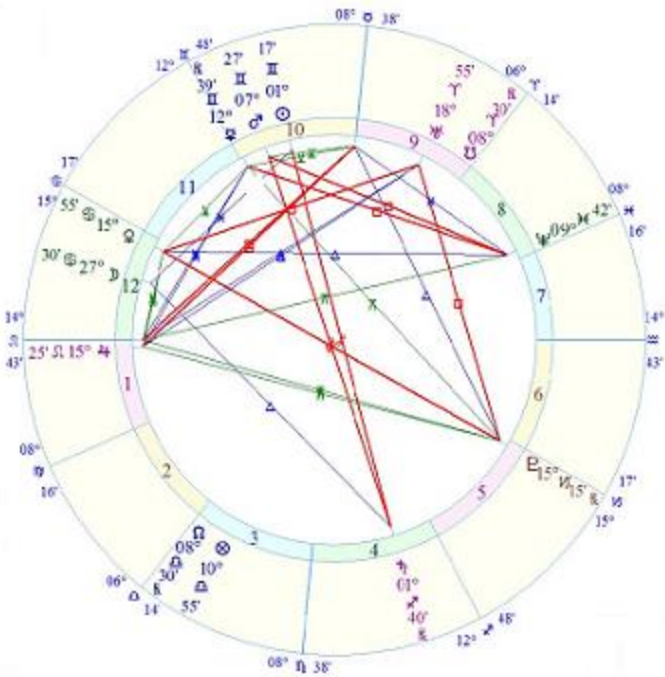
in a t-square to Neptune. Mars opposition Saturn is not new to you, since you have it nataly, and you are used to having your mercury bear the brunt of the tension. It is useful to remember that oppositions work out in relationships, and so if someone is presenting to you in a Mars-type fashion, you will automatically shift to the Saturn response, and vice



versa.

The grand trine of Jupiter and Uranus to the midheaven are good for career moves involving technology and promotion, but as with any trine, you must try to act on it to take advantage of it, and the "righteousness rectangle" involving (MC, Pluto, Venus and Mercury) will have to be dealt with, since it can lead to mental rigidity and resistance to change.

**Ina's Solar return** ascendant lies in the 2nd house of the natal chart, bringing values, money, and talent into the light and under your responsibility. You can take this and run with it, creating a bigger name for yourself, with the ruler in the public 10th house. Leo here wants you to be generous and creative. There is a t-square with beautifying transformative Pluto opposite Venus square Uranus and



Mars takes Uranus's lead and makes it public in the 10th house. The opposition between Pluto and Venus can be good for creative processes with Pluto in the 5th, and brings an outlet to what could otherwise be a frustrating yod between Pluto, Mercury and Jupiter. Only one earth planet can indicate trouble though, especially with Venus in the 12th, where money can "disappear", so be forewarned. Venus in the 12th can also be good for spirituality and a love for quiet, peaceful moments.



The preceding solar return interpretations are in no way comprehensive, if you would like to share your thoughts with their owners. ☺

---

Become a member of ASNT! Dues are \$35.00 per year, and help us to have exciting speakers and pay for our room. Renewal is \$25.00. See Debbie at the next meeting.

---

## PRE-NATAL ECLIPSES YOUR SOUL'S GIFT AND LESSON SUNDAY, MAY 3 1:30 - 4:30 PM

**Mary Burke-Kelly** will be teaching her Pre-natal eclipse workshop to find the gift and lesson revealed by your prenatal eclipses. If you wish to join the workshop, go to the website [www.dfwcutonics.com](http://www.dfwcutonics.com) and click on the tab marked "Astrology Classes". Fill out the registration form and click submit, then use the Pay Pal button to pay the tuition of \$90. You can choose to pay in cash or check at the class. Please let Mary know this in the comments or by email [mary@dfwacutonics.com](mailto:mary@dfwacutonics.com).

---

If you are in Central Texas, visit the Astrological Society of Austin. You can find out about their meetings at [www.meetup.com/Astrological-Society-of-Austin](http://www.meetup.com/Astrological-Society-of-Austin).



∞ *Mothers hold their children's hands for a moment and their hearts for Eternity.* ∞

---

### **2015 ASNT Board Members**

*President – Marie Loeb*

*Programs – Christy Hall*

*Secretary – Susan Grey*

*Treasurer – Priscilla Peers*

*Membership – Debbie Hanson*

*Publicity – Dee Emrich*

*Newsletter – Chris Light*

*Web/media – Wayne Hall*

---